



**The Jalasoft Smart Management Packs for VMWare Virtual Center deliver enterprise ready monitoring** of your network environment. You can monitor your network proactively and be aware of any potential problems that might occur, verify the status of your interfaces and ports, traffic and much more.

All information is forwarded efficiently to Microsoft System Center Operations Manager which creates a one stop interface to see the status of your servers and network infrastructure.

Alerts and performance data are **visible in Ops Mgr** and will help you take action and prevent any downtime.

A large number of **predefined rules** are provided with the Jalasoft Smart Management Pack for VMWare Virtual Center. Installation is quick and simple and starting to monitor your network is just a matter of dragging and dropping the rules on the specific servers.

This is made possible through the use of Xian Network Manager Io, the platform that runs the Smart Management Pack; no complicated programming or scripting is needed. You can also configure **syslog filters** to forward syslog alerts to Ops Mgr.

To analyze the behavior of the network device for a longer period of time, the VMWare Virtual Center Smart Management Pack has a set of **reports** that can be executed from the Ops Mgr Reporting Console.

### Rule Parameters

An easy wizard lets you configure the rule parameters. All rules have by default three steps: rule parameters, active rule options and schedule.

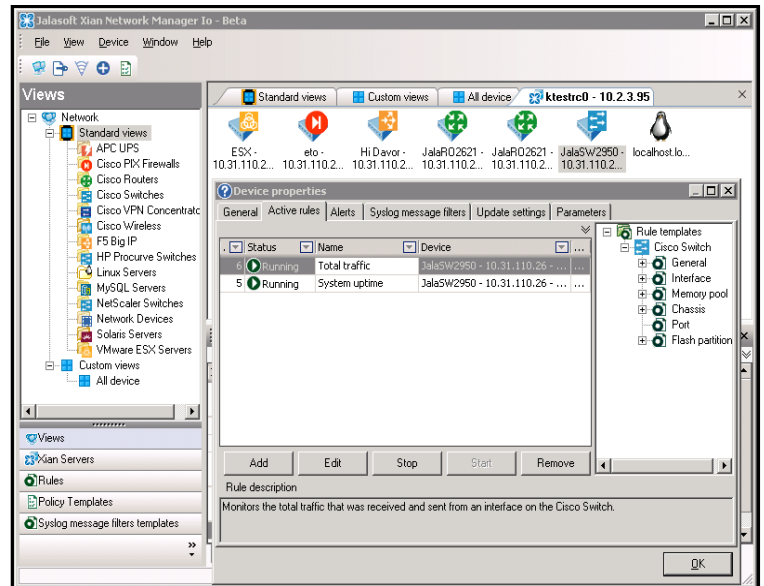
#### Parameters

You can configure when an alert will be sent to Ops Mgr. In many cases, this will

be when the value is over or under a certain threshold.

#### Active rule options

The severity level is sent to Ops Mgr when a rule meets the selected criteria. Ops Mgr organizes the alerts by severity. With this option you can predefine each alert with a different level of severity (debug, informational, warning, error or critical), define the collection of performance counters to be used in performance data views or Xian Reports, rename the rule, and enable debug mode for the active rule.



#### Schedule

You can set the interval between each execution of the rule. This can vary within a range of seconds, minutes or days. When setting this step take into account that a short interval will consume more system resources.

#### Rules

#### VMware Virtual Center performance and status rules\*

##### General

- Device availability



- ESX system uptime
- VM system uptime

#### **CPU**

- ESX CPU usage percentage
- ESX CPU usage (MHz)
- VM CPU usage (MHz)

#### **Memory**

- ESX memory usage percentage
- VM memory usage percentage

#### **Disk**

- ESX disk usage
- VM disk usage

#### **Net**

- ESX network usage
- VM network usage
- VM PcNet data receive rate
- VM PcNet data transmit rate

\*Some rules may not be applicable to specific versions.

## **Supported Models**

The Xian Io Smart Management Pack for VMWare Virtual Center supports versions 2.0.0 and 2.0.1. If you want to obtain the updated list of supported devices or if you are interested in adding support for new models, please contact us.

## **System Requirements**

Minimum requirements to install Xian Io Smart Management Pack for VMware Virtual Center for Microsoft System Center Operations Manager are:

- Windows server 2008 SP1 or higher
- SQL Server 2005 SP1 or higher
- .NET Frameworks 4.0 or higher
- Message queuing 2.0 or higher
- System Center Operations Manager 2007 R2 or 2012
- SNMP connectivity to the devices that need to be monitored

**Jalasoft Inc.**  
1219 Durham  
Houston, Texas 77007  
Toll Free: +1 888 402-6717  
Fax: +1 408 463-6155  
[www.jalasoft.com](http://www.jalasoft.com)